


SR wheel block system _ modular, universal, powerful


- 
- › **Universal** _ can be used for wheel loads from 5 Ton to 30 Ton in six frame sizes
 - › **Flexible** _ five standard configurations for connecting to customers' supporting structures
 - › **Reliable** _ SF drives for every requirement, as low-maintenance direct drives
 - › **Your choice** _ on request, drives equipped with contactor controls or frequency inverter
 - › **Maintenance-friendly** _ wheel can simply be pulled out from the front of the block
 - › **Field-proven** _ components ensure maximum performance

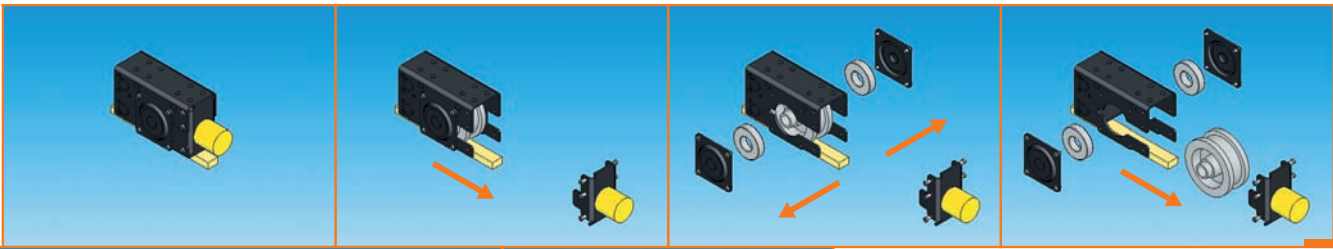
SR wheel block system _

First-class travel

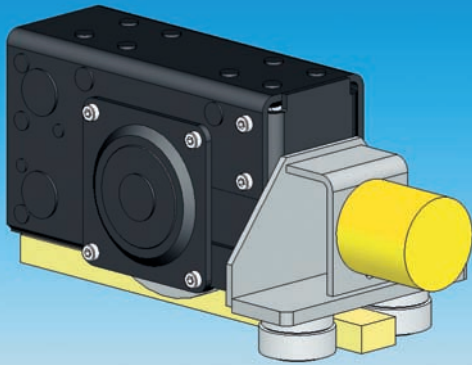


- 1 **Connection Type A** _ a connecting flange is used to weld the wheel block end to a steel structure, the connection can be dismantled.
- 2 **Bolted connection Type S** _ a connecting flange is used to bolt the wheel block end to a steel structure.
- 3 **Welded connection Type W** _ the wheel block end is welded directly to the supporting structure without any inter-mediate flange.
- 4 **Top connection Type H** _ the wheel block is bolted on at the top.
- 5 **Inserted connection Type I** _ the wheel block is plugged into a hollow profile and secured with bolts.

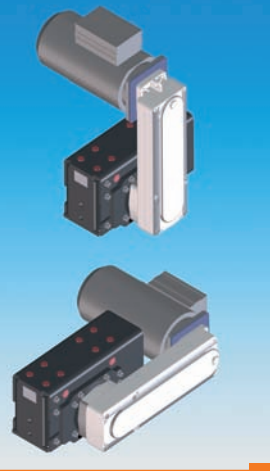
Know-how Over 130 years of tradition, over 130 years of practical approach, competence and experience. Our history is characterised by the constant impetus for innovations and significant modernisations. Lifting and transporting by the most direct route also means lifting and transporting for the success and growth of our customers. To ensure this we venture to offer our peak performance. STAHL CraneSystems is one of the world's leading brand names. As our customer you benefit from our expertise as a manufacturer of lifting technology, drive technology and control technology. The components of the new modular SR wheel block system are taken from a tried-and-tested program. This systematically modular system is designed for wheel loads from 5 Ton to 30 Ton. A wide range of different mounting methods guarantees universal and extremely flexible use of STAHL CraneSystems's wheel blocks. As with all our components and systems, the SR wheel block system is available as an option in -protected design.



9



7



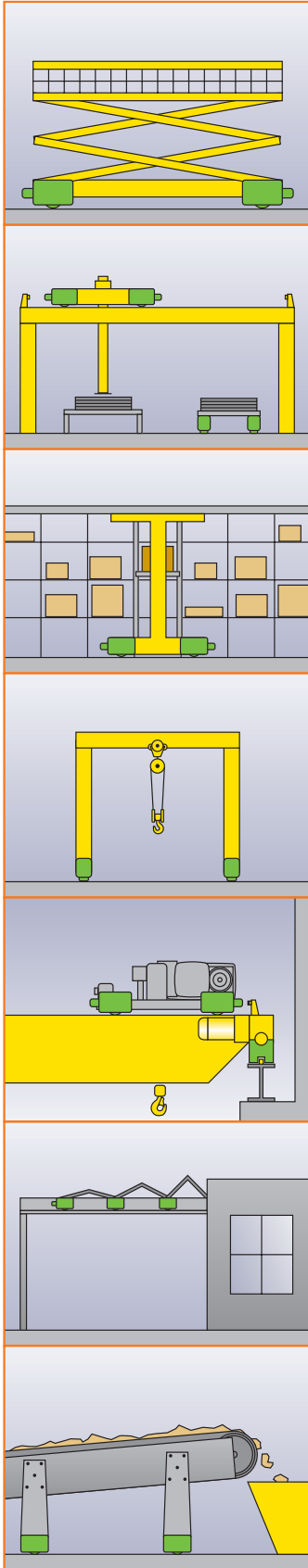
8

- 6 | The wheel blocks can be used universally. Here they are the basis of the double girder trolley of an AS70 wire rope hoist.
- 7 | The guide rollers are positive locking and securely mounted, and can be used even on relatively flat rails.
 - ➔ up to SR 200: rail height > 1¼"
 - ➔ from SR 250: rail height > 1⅝"
- 8 | As an option, the wheel blocks can be equipped with slimline "pancake" gears.
- 9 | Wheel can simply be pulled out from the front, without having to remove the unit from the supporting structure.

- › **The housing** – Up-to-date manufacturing techniques using laser-cut sheet steel parts guarantee top quality. The housing is enclosed on five sides, thus ensuring the important inherent stability and dimensional accuracy of the wheel block. Graduated frame sizes are available for the various wheel loads.
- › **The wheel** – The wheel, guided by flanges on both sides, is made of spheroidal graphite cast iron EN-GJS-700 (GGG70). This is the guarantee for quiet, runway-saving travel. The self-lubricating characteristic ensures high efficiency and reduces wear to the minimum. The lifetime lubricated roller bearings are maintenance-free. They are mounted inside the housing and thus also protected from external influences.
- › **The drives** – Reliable, flexible and compact. From pole-changing direct drive to frequency inverter, there is a choice of customer-optimised drive solutions.

- › **The guide rollers** – The standard guide roller version is designed for flanged wheels. For particular applications, infinitely adjustable guide rollers can be mounted on the wheel block. They are employed in the case of extra wide rails for example or to reduce the travelling resistance. The use of guide rollers is recommended to reduce skewing forces and minimise wear on the runway.
- › **Assembly** – Universal, flexible and simple. The ready-prepared mounting surfaces offer the most versatile connection methods for the SR wheel block by bolting, welding or simply plugging in.
- › **Wheel-changing** – The state of the wheel flanges can easily be checked. If necessary, the wheel can simply be pulled out from the front of the block after removing the end flange.

Applications



Lifting platforms

Transportation systems

Storage and retrieval machines

Portal cranes

Crane installations

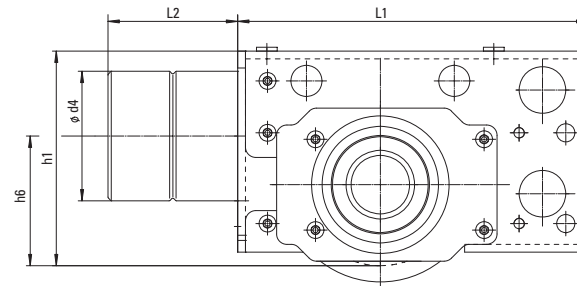
Architectural applications

Conveying systems

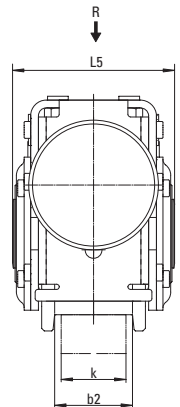
Our Service

STAHL CraneSystems supplies more than components and the SR wheel block system. We offer you our constructive cooperation in selecting the correctly dimensioned wheel block system. Our scope of supply includes, apart from our know-how and our many years of experience in the field of trolley design, a detailed Product Information brochure comprising all technical data. In the future you will profit from our technical assistance and our Original Parts Service all over the world. Just contact us, we look forward to your inquiries.

Side view



Front view



Technical data (right to alterations reserved)

	SR 125	SR 160	SR 200	SR 250	SR 315	SR 400
Wheel Ø in inches	5	6 ¼	8	10	12 ½	16
Max. wheel load in Ton	5	7	10	16	22	30
L1 in inches	10 ¾	13 ½	16	17 ¼	20	26
L2 in inches	4	5	5	6 ¼	6 ¼	8
L5 in inches	5 ⅝	6 ¾	7 ½	8 ¼	9	12 ¾
h1 in inches	6 ½	7 ½	9 ¼	11 ⅝	13 ¾	17 ⅝
h6 in inches	4	4	4	4	4	6
Ø d4 in inches	4	5	5	6 ¼	6 ¼	8
Max. Rail width k in inches	2	2 ⅝	2 ⅝	2 ¾	3 ¼	4
Max. b2 in inches	2 ⅝	2 ¾	2 ⅝	3 ¼	3 ¾	4 ½

→ www.stahlcranes.us

STAHL CraneSystems Inc., 6420 Dorchester Rd., Charleston, SC 29418, USA

Tel 843 767-1951, Fax 843 767-4366, info@stahlcranes.us

