

# STD-VARIO dual hook chain hoist \_

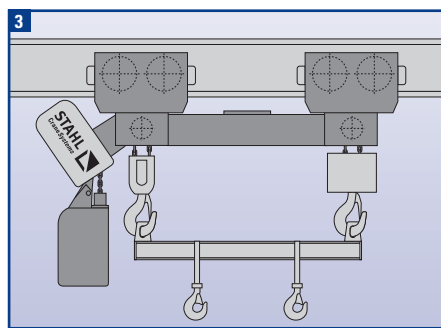
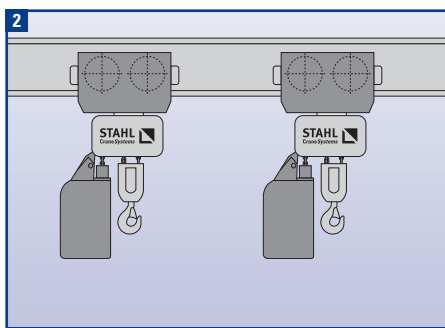
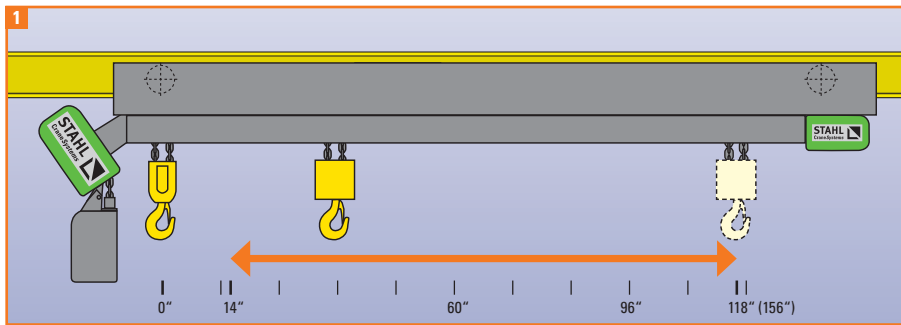
compact, flexible and safe



- **Innovative** \_  
hook spacing electrically adjustable to fit length of load, low headroom design
- **Cost-effective** \_  
no spreader beams required to fit different load lengths
- **Maximum safety** \_  
load hooks are always in sync when lifting or lowering, load hook spacing is locked when hoisting or travelling

# Dual hook chain hoist \_

## variable hook spacing to fit your load



### Compare and judge:

#### 1 Advantages of the STD-VARIO dual chain hoist

- ⊕ load can be attached securely
- ⊕ no increased headroom
- ⊕ simple electrical controls
- ⊕ completely synchronous operation
- ⊕ the load hooks cannot shift inadvertently during lifting or travelling

#### 2 Use of two individual chain hoists

- ⊖ completely synchronous operation not possible
- ⊖ complex electrical controls
- ⊖ the spacing between the hooks can change because the trolleys don't travel synchronously and this could cause the load to drop

#### 3 Use of a dual chain hoist with lifting beam

- ⊖ load beam requires additional headroom
- ⊖ either the hooks on the load beam must be moved "manually" or
- ⊖ if they are moved automatically, an additional power supply to the load beam is necessary
- ⊖ the load distribution could become lop-sided because hooks on load beam are not centered

STAHL CraneSystems has further developed the successful STD dual chain hoist. The result of many years of experience and intelligent technology is the STD-VARIO dual hook chain hoist with electrically adjustable spacing between the hooks. An innovation in the market.

Maximum Capacity [lbs]	Hoist Type	Standard Hoisting Speed [fpm]	Standard Trolley Speed [fpm]	Standard Hook Adjustment Speed [fpm]	Standard Available Hook Distance		Maximum Standard Lifting Height [ft]
					from	to	
2 x 1,000	STD 1005-8/2 4/2-2	16/4	80/20	16	14"	9'-10"	33
2 x 2,000	STD 3010-8/2 4/2-2	16/4			16"	9'-10"	26
	STD 3010-12/3 4/2-2	24/6					
2 x 3,000	STD 3016-8/2 4/2-2	16/4			16"	13'-0"	65
	STD 5016-12/3 4/2-2	24/6					
2 x 5,000	STD 5025-6/15 4/2-2	12/3			16"	13'-0"	65
	STD 5025-8/2 4/2-2	16/4					
2 x 7,000	STD 6032-6/15 4/2-2	12/3					

Other speeds and lifting heights available on request.

→ [www.stahlcranes.us](http://www.stahlcranes.us)

STAHL CraneSystems Inc., 6420 Dorchester Rd., Charleston, SC 29418, USA

Tel 843 767-1951, Fax 843 767-4366, info@stahlcranes.us

**STAHL**  
CraneSystems